

HONGPU GONIOPHOTOMETERS SYSTEM TEST REPORT

LUMINAIRE PHOTOMETRIC TEST REPORT

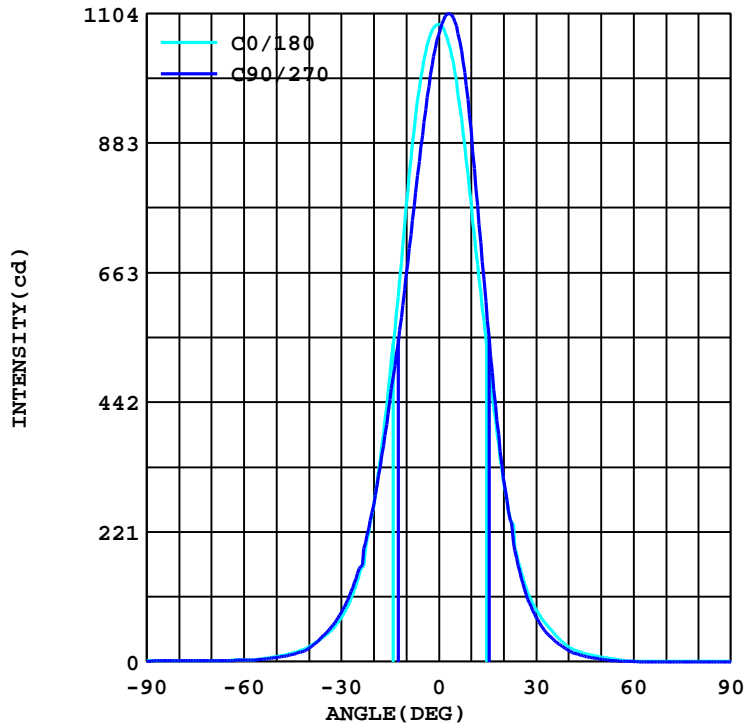
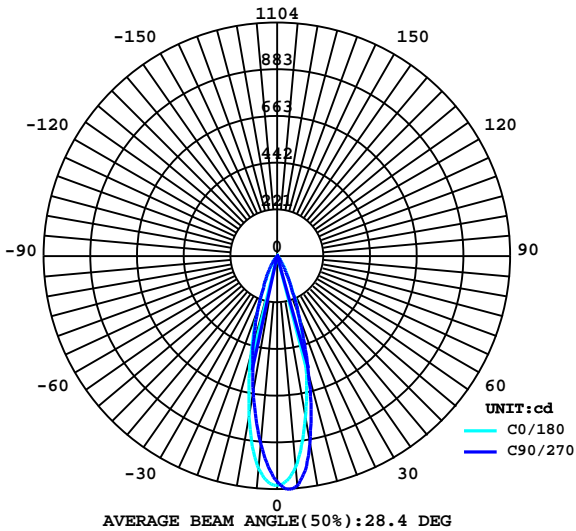
Report number:

MANUFACTURER:		Address:	
NAME: SD-5-30K-SO-LV30-WH		TYPE:	WEIGHT:N/A
SPECIFICATION:		DIMENSION: 0.063X1X0.166	SERIAL No.:N/A

DATA OF LAMP		Imax(cd)	1104	S/MH(C0/180)	0.47
MODEL	3528 LED	EFFICIENCY(%)	100.0	S/MH(C90/270)	0.42
NOMINAL POWER(W)	5.4	TOTAL FLUX(lm)	347.81	Voltage(V)	24.00
RATED VOLTAGE(V)	24	EFFICIENCY(lm/W)	63.1	Current(A)	0.228
NOMINAL FLUX(lm)	347.8	$\eta$ up(%)	1.2	Power(W)	5.510
LAMPS QUANTITY	1	$\eta$ down(%)	98.8	Power Factor(PF)	1.000
TEST VOLTAGE(V)	24.0	Effective Flux(lm)	0.0	EEL	0.000

LUMINOUS INTENSITY DISTRIBUTION

LUMINOUS INTENSITY DISTRIBUTION



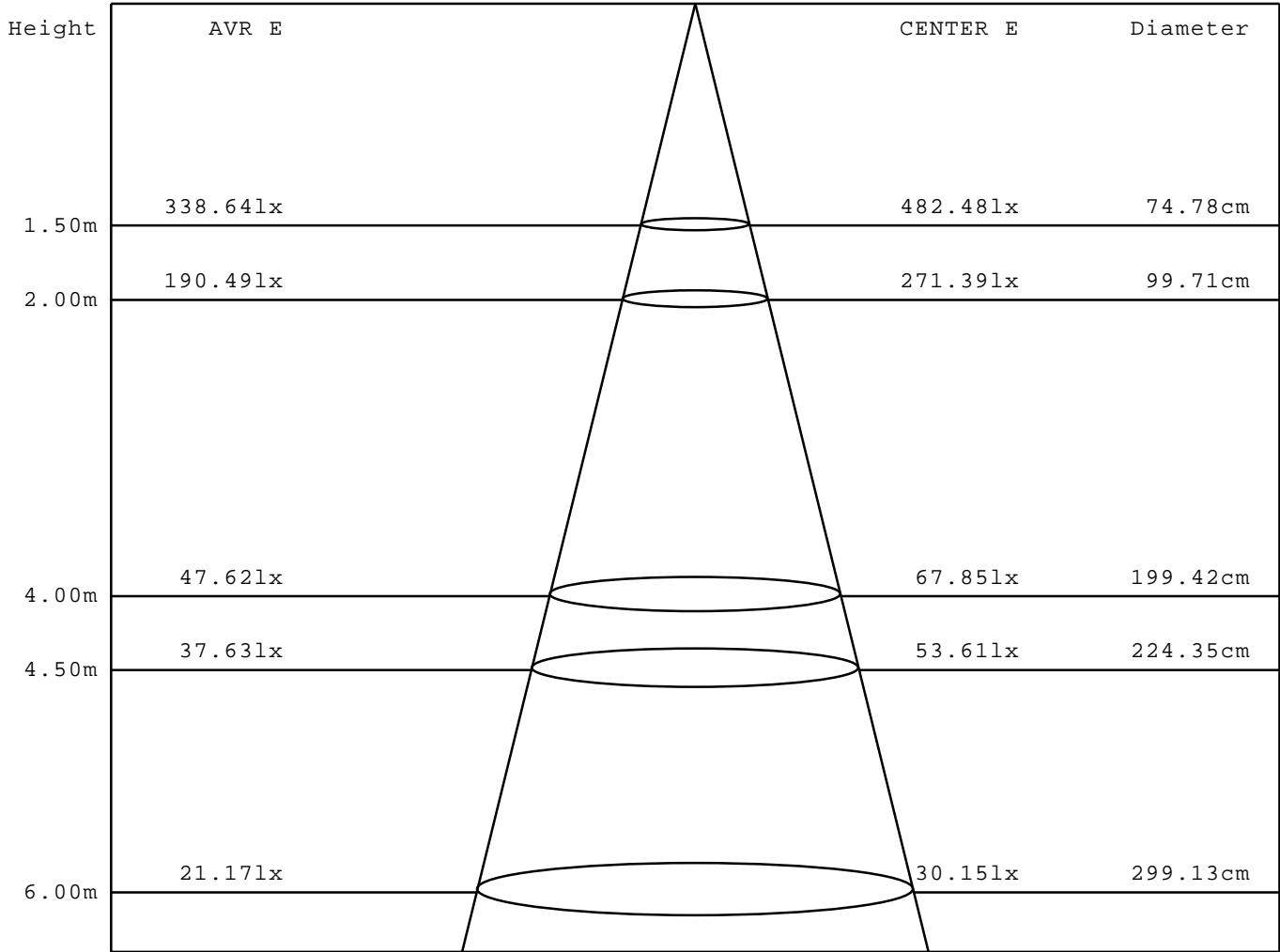
Test System:HOPOO  
 Temperature:25.3DEG  
 Operators:  
 Test Date:06-07-2022

Test Set: 5.0deg/s C-Gamma (TYPE C)  
 Humidity:65.0%  
 Test Distance:8.368 m  
 Remarks: SD-5-30K-SO-LV30-WH

AVERAGE AND CENTER E Figure

Report number:

MANUFACTURER:	Address:	
NAME: SD-5-30K-SO-LV30-WH	TYPE:	WEIGHT:N/A
SPECIFICATION:	DIMENSION: 0.063X1X0.166	SERIAL No.:N/A



Angle:28.0deg

Test System:HOP00  
 Temperature:25.3DEG  
 Operators:  
 Test Date:06-07-2022

Test Set: 5.0deg/s C-Gamma (TYPE C)  
 Humidity:65.0%  
 Test Distance:8.368 m  
 Remarks: SD-5-30K-SO-LV30-WH

HONGPU GONIOPHOTOMETERS SYSTEM TEST REPORT

ZONAL FLUX DIAGRAM

Report number:

<b>MANUFACTURER:</b>	<b>Address:</b>	
<b>NAME: SD-5-30K-SO-LV30-WH</b>	<b>TYPE:</b>	<b>WEIGHT:N/A</b>
<b>SPECIFICATION:</b>	<b>DIMENSION: 0.063X1X0.166</b>	<b>SERIAL No.:N/A</b>

$\gamma$	C0	C45	C90	C135	C180	C225	C270	C315	$\gamma$	$\Phi$ zone	$\Phi$ total
5.0	1010	934.1	896.6	892.2	1005	1065	1091	1086	0- 5	25	25
10.0	773.6	690.9	656.3	651.6	779.9	868.5	904.0	905.1	5- 10	63	88
15.0	488.6	449.1	445.9	439.1	525.5	577.6	581.9	589.2	10- 15	75	163
20.0	267.1	256.7	268.2	257.6	309.1	324.9	313.7	325.8	15- 20	64	228
25.0	138.2	133.9	149.6	136.8	161.3	159.1	152.9	159.3	20- 25	44	272
30.0	74.50	71.42	83.46	73.66	88.71	85.56	76.04	84.16	25- 30	28	300
35.0	43.90	38.79	46.77	39.70	51.60	46.77	39.56	46.00	30- 35	18	317
40.0	25.20	20.44	22.61	19.81	25.06	25.76	18.97	25.76	35- 40	11	328
45.0	14.56	9.033	12.11	8.612	13.93	13.72	9.313	14.14	40- 45	6	334
50.0	8.682	4.131	7.002	4.061	7.912	8.052	4.341	8.122	45- 50	4	338
55.0	4.201	1.330	3.641	1.400	3.851	4.761	1.120	4.551	50- 55	2	340
60.0	2.590	0.070	2.450	0.140	0.420	2.730	0.070	2.590	55- 60	1	341
65.0	2.170	0	2.030	0	0.210	2.170	0	2.100	60- 65	1	342
70.0	1.820	0	1.750	0	0.140	1.820	0	1.750	65- 70	1	342
75.0	1.610	0	1.540	0	0.140	1.540	0	1.470	70- 75	0	343
80.0	1.470	0	1.330	0	0.070	1.400	0	1.330	75- 80	0	343
85.0	1.330	0	1.190	0	0.140	1.190	0	1.190	80- 85	0	343
90.0	1.190	0	1.050	0	0	1.120	0	1.120	85- 90	0	344
95.0	1.050	0	0.980	0	0.070	1.050	0	0.980	90- 95	0	344
100.0	0.980	0	0.840	0	0.070	0.910	0	0.910	95-100	0	344
105.0	0.910	0	0.840	0	0.140	0.840	0	0.770	100-105	0	344
110.0	0.840	0	0.700	0	0.140	0.770	0	0.770	105-110	0	345
115.0	0.770	0	0.630	0	0.210	0.770	0	0.700	110-115	0	345
120.0	0.700	0	0.630	0	0.210	0.700	0	0.630	115-120	0	345
125.0	0.700	0	0.560	0	0.280	0.700	0	0.630	120-125	0	345
130.0	0.700	0	0.560	0	0.350	0.700	0	0.630	125-130	0	345
135.0	0.630	0	0.560	0	0.490	0.770	0.140	0.770	130-135	0	346
140.0	0.700	0.140	0.560	0.070	0.700	0.910	0.350	0.910	135-140	0	346
145.0	0.840	0.350	0.770	0.280	1.050	1.260	0.630	1.120	140-145	0	346
150.0	1.050	0.700	0.980	0.630	1.470	1.610	1.050	1.540	145-150	0	346
155.0	1.400	1.120	1.400	1.050	1.890	2.030	1.540	2.030	150-155	0	347
160.0	1.820	1.470	1.820	1.470	2.450	2.380	1.960	2.450	155-160	0	347
165.0	2.240	1.820	2.240	1.750	2.800	2.660	2.380	2.660	160-165	0	347
170.0	2.520	2.030	2.450	1.960	3.081	2.800	2.660	2.800	165-170	0	348
175.0	2.800	2.240	2.660	2.100	3.081	2.800	2.730	2.730	170-175	0	348
180.0	2.870	2.380	2.800	2.310	3.081	2.590	2.590	2.520	175-180	0	348
DEG	LUMINOUS INTENSITY:cd									UNIT:lm	

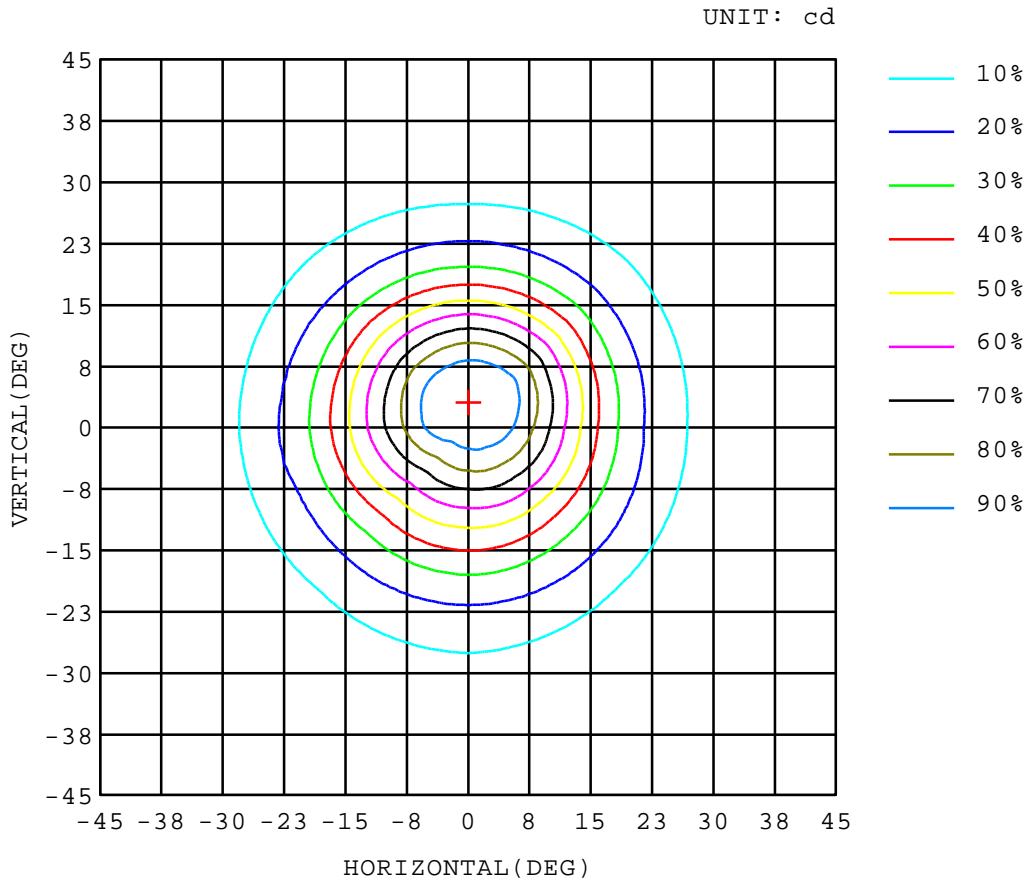
Test System:HOPOO  
 Temperature:25.3DEG  
 Operators:  
 Test Date:06-07-2022

Test Set: 5.0deg/s C-Gamma (TYPE C)  
 Humidity:65.0%  
 Test Distance:8.368 m  
 Remarks: SD-5-30K-SO-LV30-WH

ISOCANDELA DIAGRAM

Report number:

MANUFACTURER:	Address:	
NAME: SD-5-30K-SO-LV30-WH	TYPE:	WEIGHT:N/A
SPECIFICATION:	DIMENSION: 0.063X1X0.166	SERIAL No.:N/A



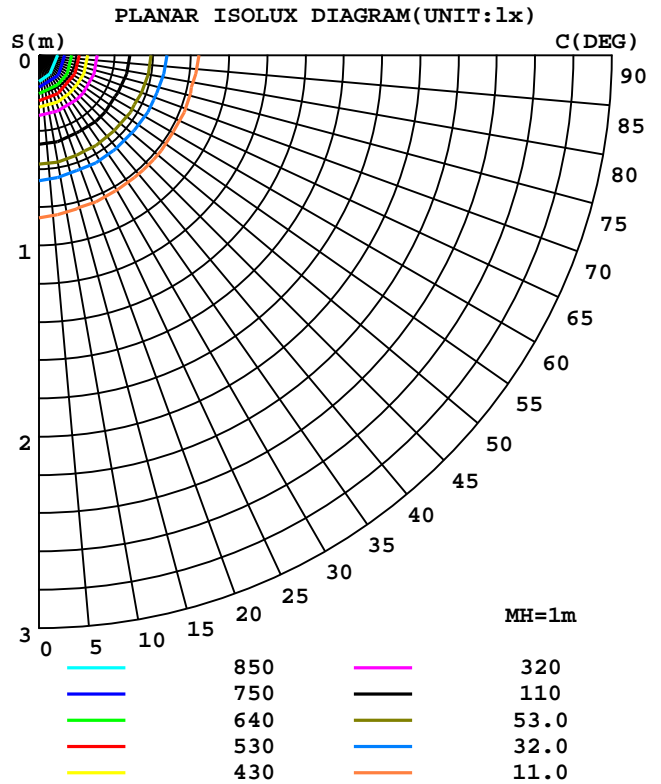
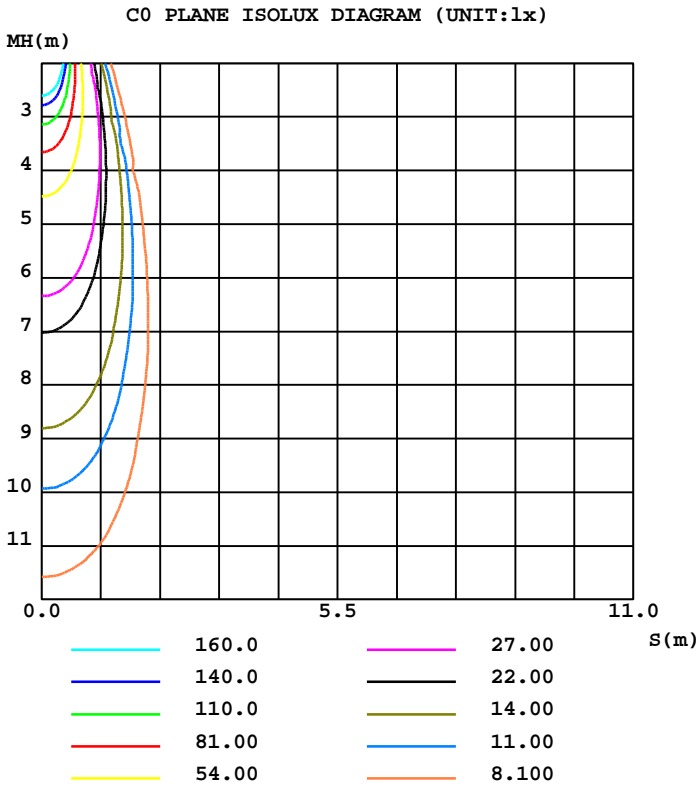
Test System:HOPOO  
 Temperature:25.3DEG  
 Operators:  
 Test Date:06-07-2022

Test Set: 5.0deg/s C-Gamma (TYPE C)  
 Humidity:65.0%  
 Test Distance:8.368 m  
 Remarks: SD-5-30K-SO-LV30-WH

ISOLUX DIAGRAM

Report number:

MANUFACTURER:	Address:	
NAME: SD-5-30K-SO-LV30-WH	TYPE:	WEIGHT:N/A
SPECIFICATION:	DIMENSION: 0.063X1X0.166	SERIAL No.:N/A



Test System:HOPOO  
 Temperature:25.3DEG  
 Operators:  
 Test Date:06-07-2022

Test Set: 5.0deg/s C-Gamma (TYPE C)  
 Humidity:65.0%  
 Test Distance:8.368 m  
 Remarks: SD-5-30K-SO-LV30-WH

HONGPU GONIOPHOTOMETERS SYSTEM TEST REPORT

LUMINOUS DISTRIBUTION INTENSITY DATA

Report number:

<b>MANUFACTURER:</b>	<b>Address:</b>	
<b>NAME: SD-5-30K-SO-LV30-WH</b>	<b>TYPE:</b>	<b>WEIGHT:N/A</b>
<b>SPECIFICATION:</b>	<b>DIMENSION: 0.063X1X0.166</b>	<b>SERIAL No.:N/A</b>

UNIT: cd

C(DEG)\ γ (DEG)	0	45	90	135	180	225	270	315
0.0	1086	1074	1068	1063	1086	1074	1068	1063
5.0	1010	934	897	892	1005	1065	1091	1086
10.0	774	691	656	652	780	869	904	905
15.0	489	449	446	439	526	578	582	589
20.0	267	257	268	258	309	325	314	326
25.0	138	134	150	137	161	159	153	159
30.0	74.5	71.4	83.4	73.6	88.7	85.5	76.0	84.1
35.0	43.9	38.7	46.7	39.7	51.6	46.7	39.5	46.0
40.0	25.2	20.4	22.6	19.8	25.0	25.7	18.9	25.7
45.0	14.5	9.03	12.1	8.61	13.9	13.7	9.31	14.1
50.0	8.68	4.13	7.00	4.06	7.91	8.05	4.34	8.12
55.0	4.20	1.33	3.64	1.40	3.85	4.76	1.12	4.55
60.0	2.59	0.07	2.45	0.14	0.42	2.73	0.07	2.59
65.0	2.17	0.00	2.03	0.00	0.21	2.17	0.00	2.10
70.0	1.82	0.00	1.75	0.00	0.14	1.82	0.00	1.75
75.0	1.61	0.00	1.54	0.00	0.14	1.54	0.00	1.47
80.0	1.47	0.00	1.33	0.00	0.07	1.40	0.00	1.33
85.0	1.33	0.00	1.19	0.00	0.14	1.19	0.00	1.19
90.0	1.19	0.00	1.05	0.00	0.00	1.12	0.00	1.12
95.0	1.05	0.00	0.98	0.00	0.07	1.05	0.00	0.98
100.0	0.98	0.00	0.84	0.00	0.07	0.91	0.00	0.91
105.0	0.91	0.00	0.84	0.00	0.14	0.84	0.00	0.77
110.0	0.84	0.00	0.70	0.00	0.14	0.77	0.00	0.77
115.0	0.77	0.00	0.63	0.00	0.21	0.77	0.00	0.70
120.0	0.70	0.00	0.63	0.00	0.21	0.70	0.00	0.63
125.0	0.70	0.00	0.56	0.00	0.28	0.70	0.00	0.63
130.0	0.70	0.00	0.56	0.00	0.35	0.70	0.00	0.63
135.0	0.63	0.00	0.56	0.00	0.49	0.77	0.14	0.77
140.0	0.70	0.14	0.56	0.07	0.70	0.91	0.35	0.91
145.0	0.84	0.35	0.77	0.28	1.05	1.26	0.63	1.12
150.0	1.05	0.70	0.98	0.63	1.47	1.61	1.05	1.54
155.0	1.40	1.12	1.40	1.05	1.89	2.03	1.54	2.03
160.0	1.82	1.47	1.82	1.47	2.45	2.38	1.96	2.45
165.0	2.24	1.82	2.24	1.75	2.80	2.66	2.38	2.66
170.0	2.52	2.03	2.45	1.96	3.08	2.80	2.66	2.80
175.0	2.80	2.24	2.66	2.10	3.08	2.80	2.73	2.73
180.0	2.87	2.38	2.80	2.31	3.08	2.59	2.59	2.52

Test System:HOPOO  
 Temperature:25.3DEG  
 Operators:  
 Test Date:06-07-2022

Test Set: 5.0deg/s C-Gamma (TYPE C)  
 Humidity:65.0%  
 Test Distance:8.368 m  
 Remarks: SD-5-30K-SO-LV30-WH