

HONGPU GONIOPHOTOMETERS SYSTEM TEST REPORT

LUMINAIRE PHOTOMETRIC TEST REPORT

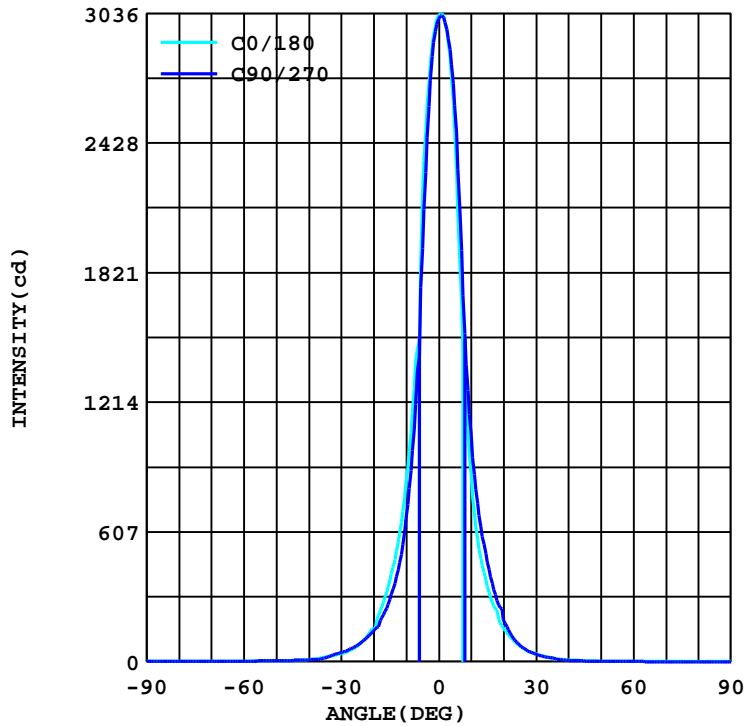
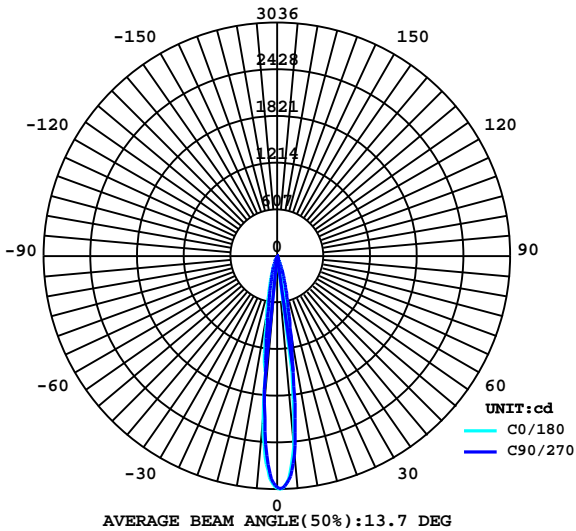
Report number:

MANUFACTURER:		Address:	
NAME: SD-5-30K-SO-LV15-WH		TYPE:	WEIGHT:N/A
SPECIFICATION:		DIMENSION: 0.063X1X0.166	SERIAL No.:N/A

DATA OF LAMP		Imax(cd)	3036	S/MH(C0/180)	0.21
MODEL	3528 LED	EFFICIENCY(%)	100.0	S/MH(C90/270)	0.21
NOMINAL POWER(W)	5.4	TOTAL FLUX(lm)	333.57	Voltage(V)	24.00
RATED VOLTAGE(V)	24	EFFICIENCY(lm/W)	60.1	Current(A)	0.229
NOMINAL FLUX(lm)	333.6	η up(%)	1.3	Power(W)	5.550
LAMPS QUANTITY	1	η down(%)	98.7	Power Factor(PF)	1.000
TEST VOLTAGE(V)	24.0	Effective Flux(lm)	0.0	EEL	0.000

LUMINOUS INTENSITY DISTRIBUTION

LUMINOUS INTENSITY DISTRIBUTION



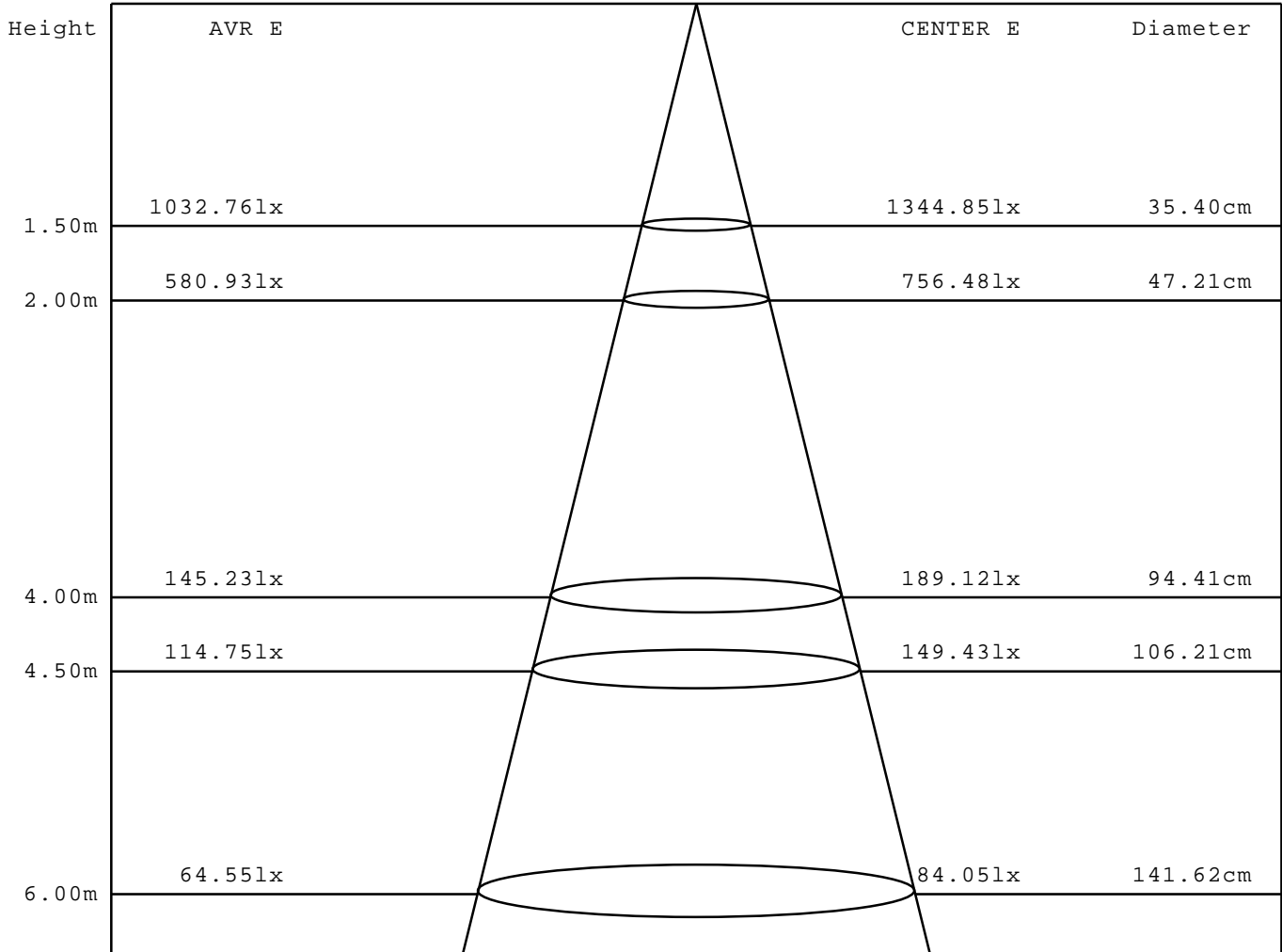
Test System:HOPOO
 Temperature:25.3DEG
 Operators:
 Test Date:06-07-2022

Test Set: 5.0deg/s C-Gamma (TYPE C)
 Humidity:65.0%
 Test Distance:8.368 m
 Remarks: SD-5-30K-SO-LV15-WH

AVERAGE AND CENTER E Figure

Report number:

MANUFACTURER:	Address:	
NAME: SD-5-30K-SO-LV15-WH	TYPE:	WEIGHT:N/A
SPECIFICATION:	DIMENSION: 0.063X1X0.166	SERIAL No.:N/A



Angle:13.5deg

Test System:HOPOO
 Temperature:25.3DEG
 Operators:
 Test Date:06-07-2022

Test Set: 5.0deg/s C-Gamma (TYPE C)
 Humidity:65.0%
 Test Distance:8.368 m
 Remarks: SD-5-30K-SO-LV15-WH

HONGPU GONIOPHOTOMETERS SYSTEM TEST REPORT

ZONAL FLUX DIAGRAM

Report number:

MANUFACTURER:	Address:	
NAME: SD-5-30K-SO-LV15-WH	TYPE:	WEIGHT:N/A
SPECIFICATION:	DIMENSION: 0.063X1X0.166	SERIAL No.:N/A

γ	C0	C45	C90	C135	C180	C225	C270	C315	γ	Φ zone	Φ total
5.0	2194	2015	1934	1880	2492	2587	2602	2627	0- 5	64	64
10.0	836.2	730.4	669.7	625.3	874.1	970.2	1060	1087	5- 10	99	163
15.0	382.6	311.7	293.3	276.6	352.6	415.3	465.9	508.0	10- 15	66	229
20.0	155.5	142.2	144.3	131.2	156.2	187.8	195.8	230.4	15- 20	42	271
25.0	73.03	65.26	77.72	65.82	73.94	80.94	77.09	93.06	20- 25	24	295
30.0	37.18	34.17	43.06	35.22	36.69	40.33	34.38	41.87	25- 30	14	309
35.0	21.56	19.88	17.92	17.08	15.82	23.17	16.73	23.17	30- 35	8	317
40.0	9.243	4.761	8.822	4.061	7.982	9.383	5.671	13.30	35- 40	4	321
45.0	5.951	2.240	5.951	1.890	4.901	6.162	2.870	6.652	40- 45	2	323
50.0	4.131	1.050	3.851	0.770	2.730	4.271	1.400	4.481	45- 50	1	325
55.0	3.291	0.420	3.011	0.350	0.700	3.221	0.490	3.431	50- 55	1	326
60.0	2.590	0.140	2.520	0.070	0.420	2.660	0.140	2.730	55- 60	1	326
65.0	2.170	0	2.100	0	0.210	2.170	0	2.240	60- 65	1	327
70.0	1.890	0	1.820	0	0.140	1.890	0	1.890	65- 70	1	328
75.0	1.750	0	1.540	0	0.070	1.680	0	1.680	70- 75	0	328
80.0	1.540	0	1.400	0	0.140	1.400	0	1.470	75- 80	0	328
85.0	1.400	0	1.260	0	0.070	1.330	0	1.330	80- 85	0	329
90.0	1.260	0	1.190	0	0.070	1.190	0	1.190	85- 90	0	329
95.0	1.190	0	1.050	0	0.070	1.120	0	1.120	90- 95	0	329
100.0	1.120	0	0.980	0	0.140	1.050	0	1.050	95-100	0	330
105.0	0.980	0	0.910	0	0.140	0.980	0	0.910	100-105	0	330
110.0	0.910	0	0.770	0	0.140	0.840	0	0.910	105-110	0	330
115.0	0.840	0	0.770	0	0.140	0.840	0	0.840	110-115	0	331
120.0	0.770	0	0.700	0	0.210	0.770	0	0.770	115-120	0	331
125.0	0.700	0	0.700	0	0.280	0.700	0	0.700	120-125	0	331
130.0	0.700	0	0.630	0	0.350	0.700	0	0.700	125-130	0	331
135.0	0.630	0	0.560	0	0.350	0.700	0.070	0.700	130-135	0	331
140.0	0.700	0.070	0.630	0	0.560	0.840	0.210	0.770	135-140	0	331
145.0	0.770	0.210	0.700	0.210	0.840	1.050	0.420	0.980	140-145	0	332
150.0	0.910	0.490	0.840	0.560	1.330	1.540	0.910	1.470	145-150	0	332
155.0	1.260	0.980	1.260	1.050	1.960	2.450	1.470	2.310	150-155	0	332
160.0	1.820	1.750	1.960	1.890	2.590	3.221	2.170	3.151	155-160	0	333
165.0	2.520	2.590	2.590	2.520	3.011	3.641	2.730	3.641	160-165	0	333
170.0	2.800	2.590	2.870	2.520	3.291	3.571	3.011	3.571	165-170	0	333
175.0	2.730	2.240	2.660	2.170	3.151	2.940	2.870	2.940	170-175	0	334
180.0	2.660	2.170	2.660	2.100	2.870	2.450	2.450	2.380	175-180	0	334
DEG	LUMINOUS INTENSITY:cd								UNIT:lm		

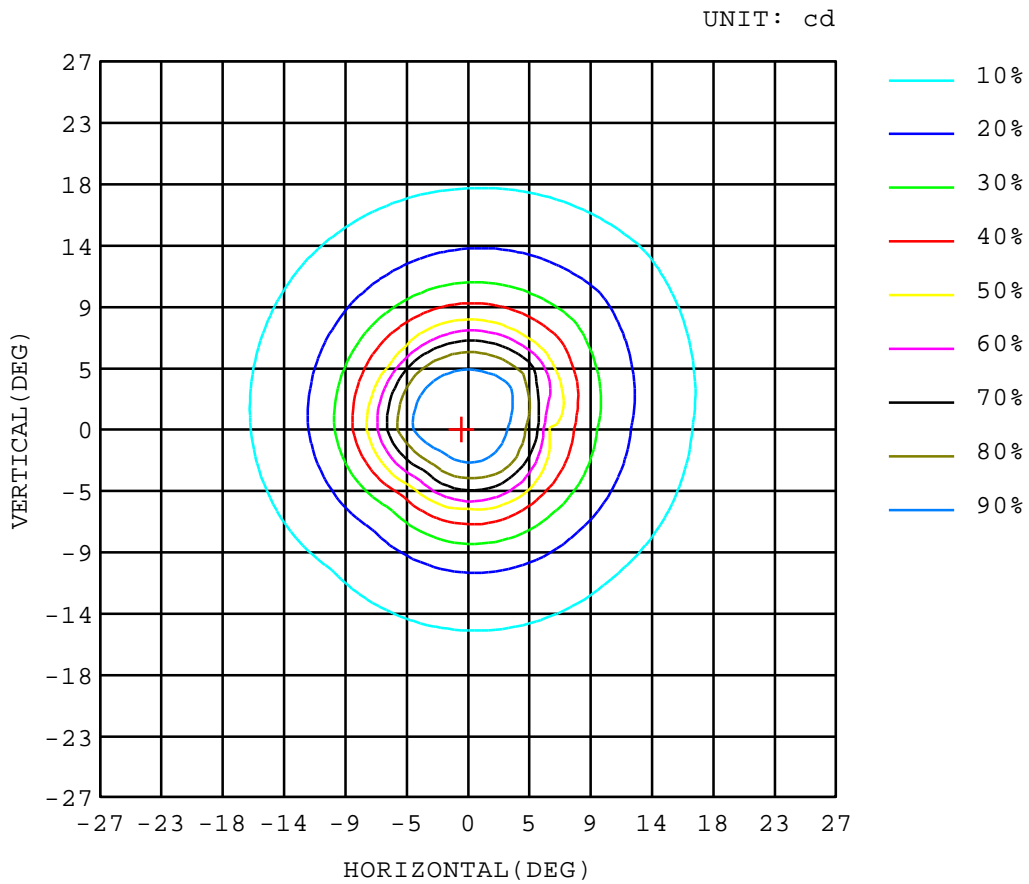
Test System:HOPOO
 Temperature:25.3DEG
 Operators:
 Test Date:06-07-2022

Test Set: 5.0deg/s C-Gamma (TYPE C)
 Humidity:65.0%
 Test Distance:8.368 m
 Remarks: SD-5-30K-SO-LV15-WH

ISOCANDELA DIAGRAM

Report number:

MANUFACTURER:	Address:	
NAME: SD-5-30K-SO-LV15-WH	TYPE:	WEIGHT:N/A
SPECIFICATION:	DIMENSION: 0.063X1X0.166	SERIAL No.:N/A



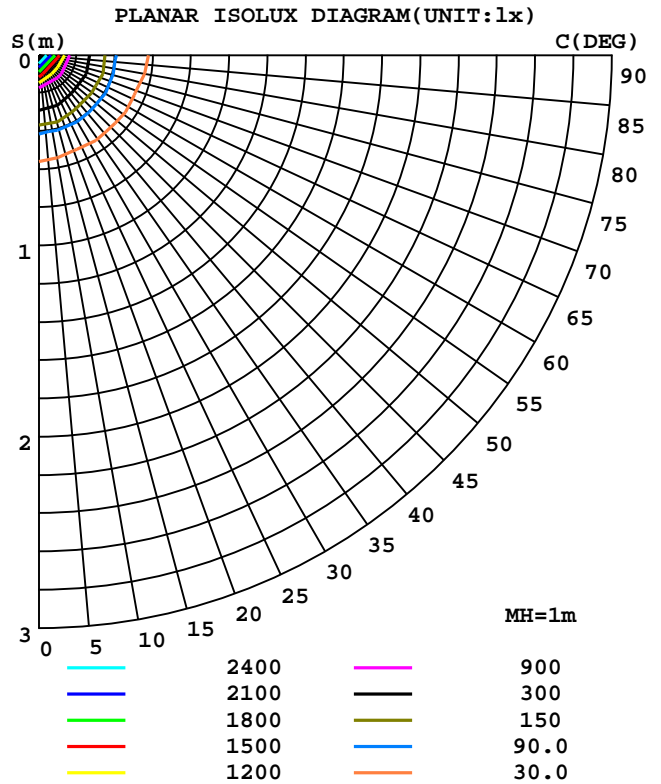
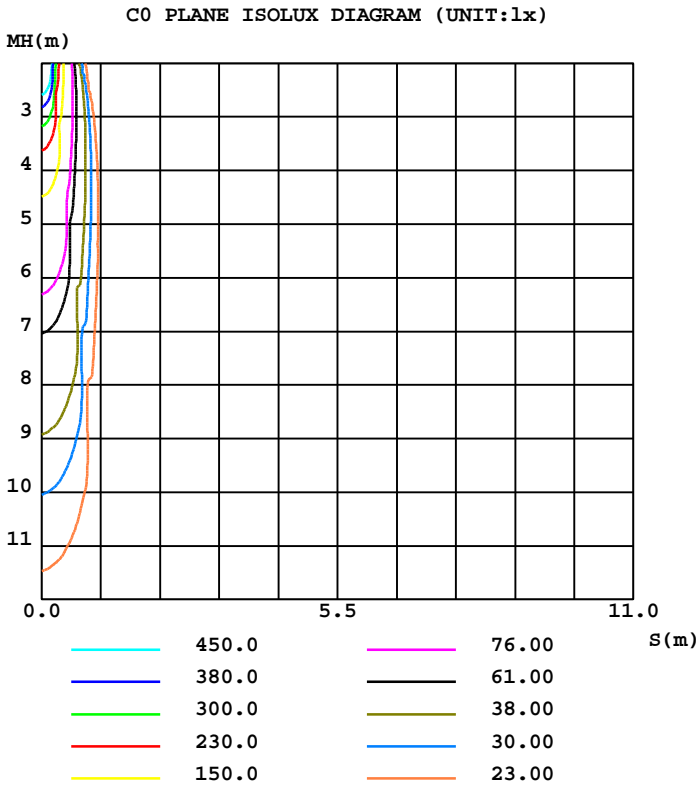
Test System:HOPOO
 Temperature:25.3DEG
 Operators:
 Test Date:06-07-2022

Test Set: 5.0deg/s C-Gamma (TYPE C)
 Humidity:65.0%
 Test Distance:8.368 m
 Remarks: SD-5-30K-SO-LV15-WH

ISOLUX DIAGRAM

Report number:

MANUFACTURER:	Address:	
NAME: SD-5-30K-SO-LV15-WH	TYPE:	WEIGHT:N/A
SPECIFICATION:	DIMENSION: 0.063X1X0.166	SERIAL No.:N/A



Test System:HOPOO
 Temperature:25.3DEG
 Operators:
 Test Date:06-07-2022

Test Set: 5.0deg/s C-Gamma (TYPE C)
 Humidity:65.0%
 Test Distance:8.368 m
 Remarks: SD-5-30K-SO-LV15-WH

HONGPU GONIOPHOTOMETERS SYSTEM TEST REPORT

LUMINOUS DISTRIBUTION INTENSITY DATA

Report number:

MANUFACTURER:	Address:	
NAME: SD-5-30K-SO-LV15-WH	TYPE:	WEIGHT:N/A
SPECIFICATION:	DIMENSION: 0.063X1X0.166	SERIAL No.:N/A

UNIT: cd

C(DEG)\ γ (DEG)	0	45	90	135	180	225	270	315
0.0	3026	3013	3009	3000	3026	3013	3009	3000
5.0	2194	2015	1934	1880	2492	2587	2602	2627
10.0	836	730	670	625	874	970	1060	1087
15.0	383	312	293	277	353	415	466	508
20.0	156	142	144	131	156	188	196	230
25.0	73.0	65.2	77.7	65.8	73.9	80.9	77.0	93.0
30.0	37.1	34.1	43.0	35.2	36.6	40.3	34.3	41.8
35.0	21.5	19.8	17.9	17.0	15.8	23.1	16.7	23.1
40.0	9.24	4.76	8.82	4.06	7.98	9.38	5.67	13.3
45.0	5.95	2.24	5.95	1.89	4.90	6.16	2.87	6.65
50.0	4.13	1.05	3.85	0.77	2.73	4.27	1.40	4.48
55.0	3.29	0.42	3.01	0.35	0.70	3.22	0.49	3.43
60.0	2.59	0.14	2.52	0.07	0.42	2.66	0.14	2.73
65.0	2.17	0.00	2.10	0.00	0.21	2.17	0.00	2.24
70.0	1.89	0.00	1.82	0.00	0.14	1.89	0.00	1.89
75.0	1.75	0.00	1.54	0.00	0.07	1.68	0.00	1.68
80.0	1.54	0.00	1.40	0.00	0.14	1.40	0.00	1.47
85.0	1.40	0.00	1.26	0.00	0.07	1.33	0.00	1.33
90.0	1.26	0.00	1.19	0.00	0.07	1.19	0.00	1.19
95.0	1.19	0.00	1.05	0.00	0.07	1.12	0.00	1.12
100.0	1.12	0.00	0.98	0.00	0.14	1.05	0.00	1.05
105.0	0.98	0.00	0.91	0.00	0.14	0.98	0.00	0.91
110.0	0.91	0.00	0.77	0.00	0.14	0.84	0.00	0.91
115.0	0.84	0.00	0.77	0.00	0.14	0.84	0.00	0.84
120.0	0.77	0.00	0.70	0.00	0.21	0.77	0.00	0.77
125.0	0.70	0.00	0.70	0.00	0.28	0.70	0.00	0.70
130.0	0.70	0.00	0.63	0.00	0.35	0.70	0.00	0.70
135.0	0.63	0.00	0.56	0.00	0.35	0.70	0.07	0.70
140.0	0.70	0.07	0.63	0.00	0.56	0.84	0.21	0.77
145.0	0.77	0.21	0.70	0.21	0.84	1.05	0.42	0.98
150.0	0.91	0.49	0.84	0.56	1.33	1.54	0.91	1.47
155.0	1.26	0.98	1.26	1.05	1.96	2.45	1.47	2.31
160.0	1.82	1.75	1.96	1.89	2.59	3.22	2.17	3.15
165.0	2.52	2.59	2.59	2.52	3.01	3.64	2.73	3.64
170.0	2.80	2.59	2.87	2.52	3.29	3.57	3.01	3.57
175.0	2.73	2.24	2.66	2.17	3.15	2.94	2.87	2.94
180.0	2.66	2.17	2.66	2.10	2.87	2.45	2.45	2.38

Test System:HOPOO
 Temperature:25.3DEG
 Operators:
 Test Date:06-07-2022

Test Set: 5.0deg/s C-Gamma (TYPE C)
 Humidity:65.0%
 Test Distance:8.368 m
 Remarks: SD-5-30K-SO-LV15-WH