

HONGPU GONIOPHOTOMETERS SYSTEM TEST REPORT

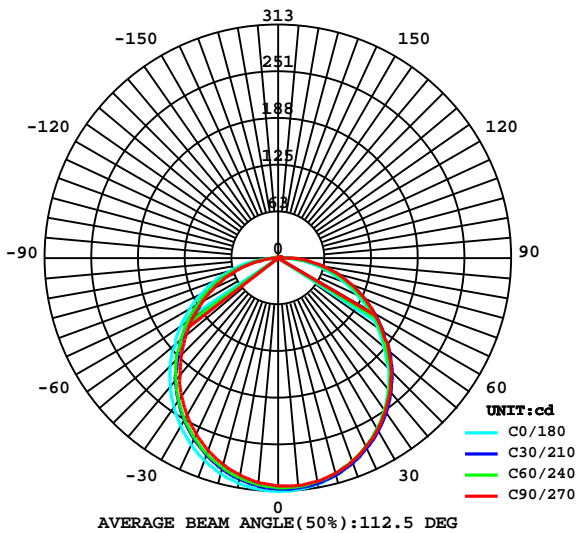
LUMINAIRE PHOTOMETRIC TEST REPORT

Report number:

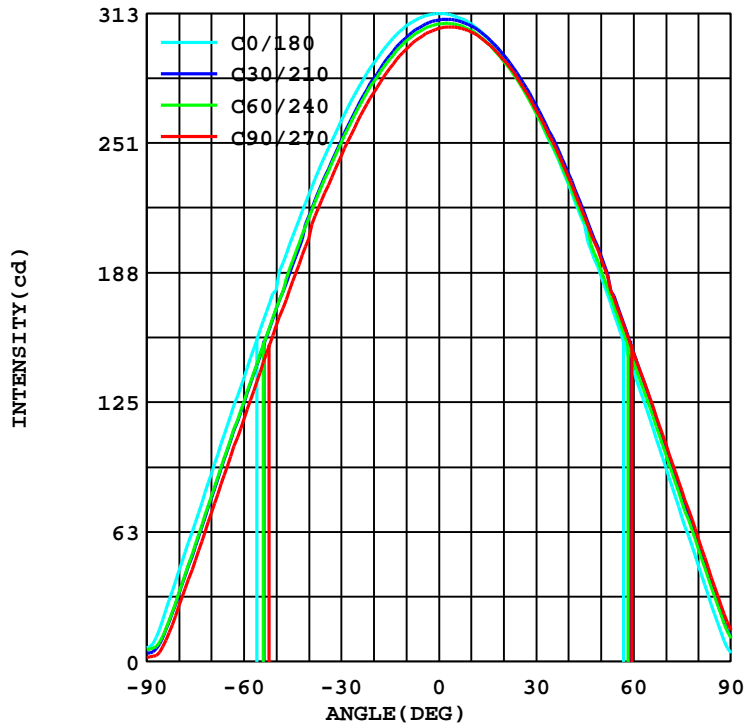
MANUFACTURER:		Address:	
NAME: KBX-SF-V-30K-24V		TYPE:	WEIGHT:N/A
SPECIFICATION:		DIMENSION:	SERIAL No.:N/A

DATA OF LAMP		Imax(cd)	313.4	S/MH(C0/180)	1.24
MODEL		EFFICIENCY(%)	100.0	S/MH(C90/270)	1.20
NOMINAL POWER(W)	10	TOTAL FLUX(lm)	912.51	Voltage(V)	24.00
RATED VOLTAGE(V)	24	EFFICIENCY(lm/W)	85.4	Current(A)	0.445
NOMINAL FLUX(lm)	912.5	$\eta$ up(%)	2.0	Power(W)	10.69
LAMPS QUANTITY	1	$\eta$ down(%)	98.0	Power Factor(PF)	1.000
TEST VOLTAGE(V)	24.0	Effective Flux(lm)	881.1	EEL	0.154

LUMINOUS INTENSITY DISTRIBUTION



LUMINOUS INTENSITY DISTRIBUTION



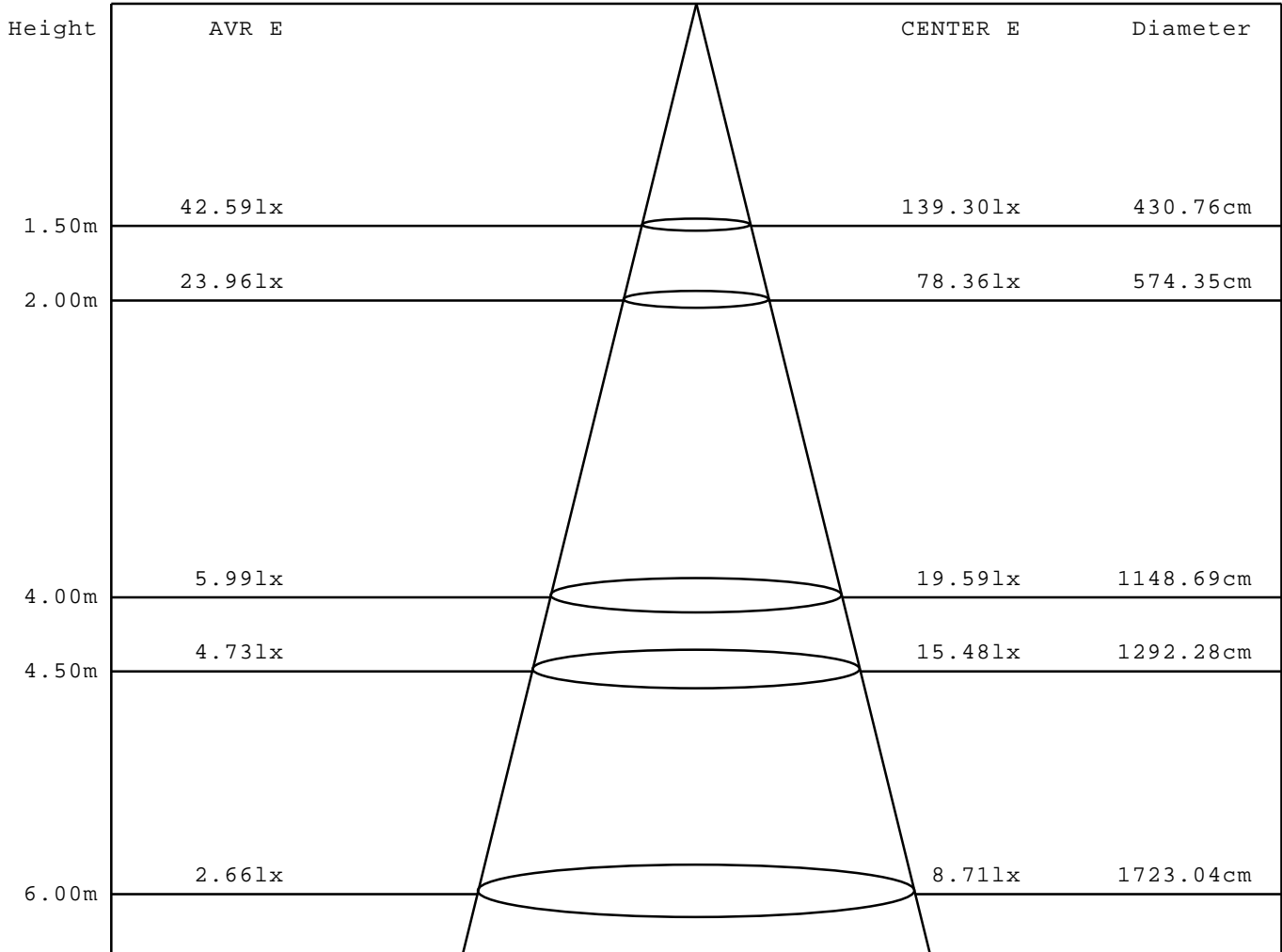
Test System:HOPOO  
 Temperature:25.3DEG  
 Operators:  
 Test Date:07-21-2022

Test Set: 5.0deg/s C-Gamma (TYPE C)  
 Humidity:65.0%  
 Test Distance:8.368 m  
 Remarks: 24 Volts 12 Sections

AVERAGE AND CENTER E Figure

Report number:

MANUFACTURER:	Address:	
NAME: KBX-SF-V-30K-24V	TYPE:	WEIGHT:N/A
SPECIFICATION:	DIMENSION:	SERIAL No.:N/A



Angle:110.3deg

Test System:HOP00  
 Temperature:25.3DEG  
 Operators:  
 Test Date:07-21-2022

Test Set: 5.0deg/s C-Gamma (TYPE C)  
 Humidity:65.0%  
 Test Distance:8.368 m  
 Remarks: 24 Volts 12 Sections

HONGPU GONIOPHOTOMETERS SYSTEM TEST REPORT

ZONAL FLUX DIAGRAM

Report number:

<b>MANUFACTURER:</b>	<b>Address:</b>	
<b>NAME: KBX-SF-V-30K-24V</b>	<b>TYPE:</b>	<b>WEIGHT:N/A</b>
<b>SPECIFICATION:</b>	<b>DIMENSION:</b>	<b>SERIAL No.:N/A</b>

$\gamma$	C0	C45	C90	C135	C180	C225	C270	C315	$\gamma$	$\Phi$ zone	$\Phi$ total
5.0	311.6	306.4	302.5	301.4	312.1	309.1	306.7	304.1	0- 5	7.340	7.340
10.0	307.2	300.7	296.0	295.8	308.1	306.1	304.3	301.2	5- 10	21.76	29.10
15.0	299.7	292.3	286.8	287.6	301.5	300.4	299.1	295.4	10- 15	35.40	64.50
20.0	289.4	281.1	275.1	276.8	292.2	291.9	291.0	286.8	15- 20	47.79	112.3
25.0	276.5	267.5	261.0	263.7	279.9	280.6	280.1	275.4	20- 25	58.50	170.8
30.0	261.6	251.6	244.5	248.4	265.6	267.2	266.9	261.8	25- 30	67.17	237.9
35.0	244.3	233.8	226.6	231.2	249.0	251.5	251.5	246.2	30- 35	73.56	311.5
40.0	225.6	214.6	204.4	212.5	230.5	233.9	234.1	228.6	35- 40	77.49	389.0
45.0	205.5	192.9	183.8	191.0	211.2	214.7	215.2	210.4	40- 45	78.74	467.7
50.0	179.2	170.4	162.1	168.9	185.9	192.4	194.5	187.7	45- 50	77.27	545.0
55.0	160.3	148.2	139.6	146.9	163.7	169.8	171.3	165.5	50- 55	73.51	618.5
60.0	137.3	125.4	117.2	124.5	140.8	147.6	149.6	143.8	55- 60	67.89	686.4
65.0	114.3	102.6	94.67	102.0	117.4	125.0	127.5	121.6	60- 65	60.46	746.9
70.0	90.96	79.58	71.98	79.26	94.04	102.1	105.3	99.25	65- 70	51.43	798.3
75.0	67.43	56.29	49.15	56.19	69.88	78.84	82.69	76.39	70- 75	41.06	839.4
80.0	43.69	32.94	26.67	33.08	46.21	55.31	59.23	53.25	75- 80	29.61	869.0
85.0	20.23	11.90	7.212	11.86	23.10	32.10	36.27	30.63	80- 85	17.65	886.7
90.0	6.512	4.936	2.030	4.096	4.131	11.62	15.26	11.20	85- 90	7.453	894.1
95.0	2.520	4.516	1.820	3.466	0.420	5.216	6.442	5.846	90- 95	2.795	896.9
100.0	2.310	4.236	1.820	3.221	0.560	4.691	5.741	5.391	95-100	2.139	899.0
105.0	2.170	3.781	1.610	2.765	0.700	4.306	4.901	4.866	100-105	1.943	901.0
110.0	2.030	3.536	1.610	2.555	0.840	3.641	4.621	4.341	105-110	1.692	902.7
115.0	2.030	3.326	1.680	2.485	0.980	3.431	4.341	4.026	110-115	1.536	904.2
120.0	1.960	2.975	1.680	2.380	1.050	3.186	4.131	3.641	115-120	1.392	905.6
125.0	1.960	2.660	1.680	2.310	1.190	2.975	3.851	3.186	120-125	1.233	906.8
130.0	1.960	2.450	1.680	2.170	1.330	2.660	3.641	2.940	125-130	1.087	907.9
135.0	1.960	2.240	1.680	2.065	1.400	2.520	3.291	2.660	130-135	0.943	908.9
140.0	1.960	1.855	1.610	1.890	1.540	2.450	3.081	2.415	135-140	0.815	909.7
145.0	1.890	1.890	1.540	1.785	1.610	2.240	2.800	2.100	140-145	0.685	910.4
150.0	1.960	1.750	1.540	1.715	1.610	1.995	2.590	1.995	145-150	0.572	910.9
155.0	2.030	1.610	1.540	1.715	1.750	1.960	2.520	1.820	150-155	0.470	911.4
160.0	1.960	1.680	1.470	1.610	1.820	1.820	2.380	1.750	155-160	0.377	911.8
165.0	2.030	1.645	1.540	1.645	1.820	1.750	2.170	1.715	160-165	0.291	912.1
170.0	2.030	1.680	1.540	1.680	1.890	1.785	2.100	1.715	165-170	0.210	912.3
175.0	2.030	1.715	1.610	1.680	2.030	1.750	2.100	1.715	170-175	0.127	912.4
180.0	2.030	1.715	1.680	1.680	2.170	1.715	1.960	1.680	175-180	0.043	912.5
DEG	LUMINOUS INTENSITY:cd								UNIT:lm		

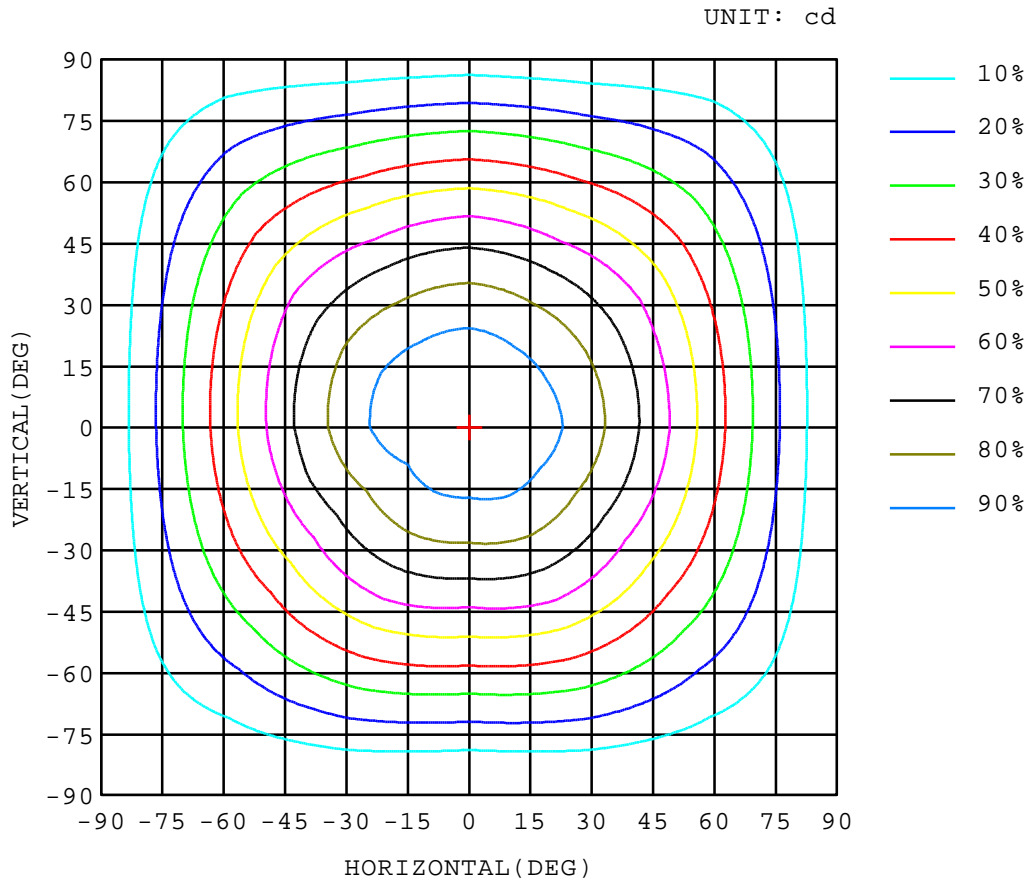
Test System:HOPOO  
 Temperature:25.3DEG  
 Operators:  
 Test Date:07-21-2022

Test Set: 5.0deg/s C-Gamma (TYPE C)  
 Humidity:65.0%  
 Test Distance:8.368 m  
 Remarks: 24 Volts 12 Sections

ISOCANDELA DIAGRAM

Report number:

MANUFACTURER:	Address:	
NAME: KBX-SF-V-30K-24V	TYPE:	WEIGHT:N/A
SPECIFICATION:	DIMENSION:	SERIAL No.:N/A



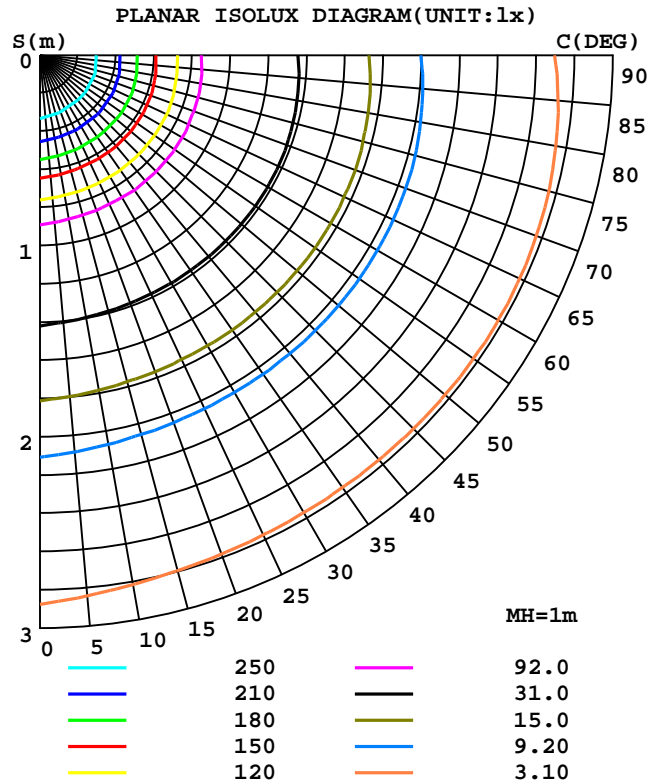
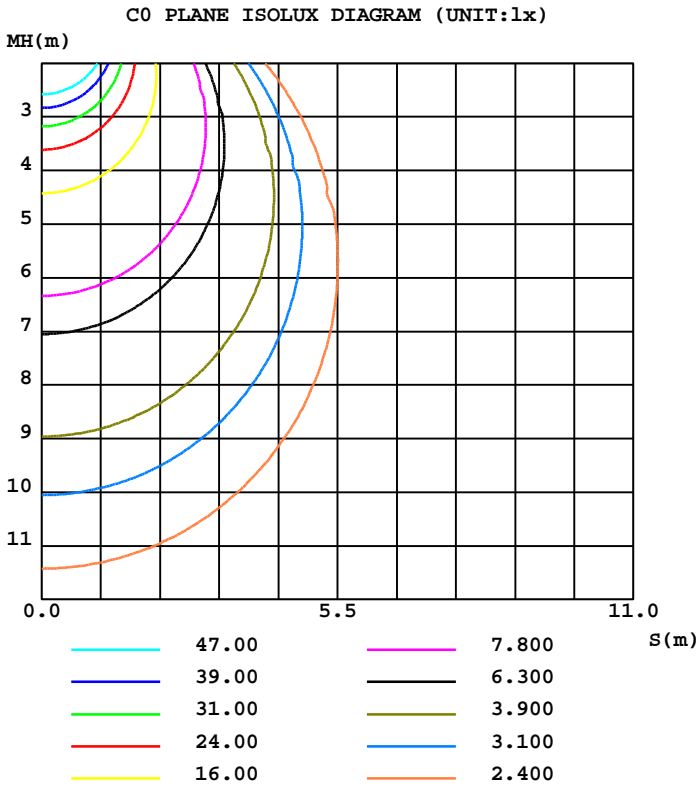
Test System:HOPOO  
 Temperature:25.3DEG  
 Operators:  
 Test Date:07-21-2022

Test Set: 5.0deg/s C-Gamma (TYPE C)  
 Humidity:65.0%  
 Test Distance:8.368 m  
 Remarks: 24 Volts 12 Sections

ISOLUX DIAGRAM

Report number:

MANUFACTURER:	Address:	
NAME: KBX-SF-V-30K-24V	TYPE:	WEIGHT:N/A
SPECIFICATION:	DIMENSION:	SERIAL No.:N/A



Test System:HOPOO  
 Temperature:25.3DEG  
 Operators:  
 Test Date:07-21-2022

Test Set: 5.0deg/s C-Gamma (TYPE C)  
 Humidity:65.0%  
 Test Distance:8.368 m  
 Remarks: 24 Volts 12 Sections

HONGPU GONIOPHOTOMETERS SYSTEM TEST REPORT

LUMINOUS DISTRIBUTION INTENSITY DATA

Report number:

<b>MANUFACTURER:</b>	<b>Address:</b>	
<b>NAME: KBX-SF-V-30K-24V</b>	<b>TYPE:</b>	<b>WEIGHT:N/A</b>
<b>SPECIFICATION:</b>	<b>DIMENSION:</b>	<b>SERIAL No.:N/A</b>

UNIT: cd

C(DEG)\ γ (DEG)	0	30	60	90	120	150	180	210	240	270	300	330
0.0	313	310	308	306	305	303	313	310	308	306	305	303
5.0	312	307	306	303	302	301	312	310	308	307	305	303
10.0	307	302	300	296	296	295	308	307	305	304	302	301
15.0	300	293	291	287	288	287	302	302	299	299	296	295
20.0	289	282	280	275	277	276	292	293	291	291	287	286
25.0	277	268	267	261	264	264	280	282	279	280	276	275
30.0	262	252	251	245	249	248	266	269	265	267	262	262
35.0	244	234	233	227	231	231	249	253	250	252	246	246
40.0	226	215	214	204	213	213	231	236	232	234	229	229
45.0	206	192	194	184	192	190	211	217	213	215	211	210
50.0	179	170	171	162	169	168	186	196	189	195	186	189
55.0	160	148	149	140	148	146	164	172	168	171	165	166
60.0	137	125	126	117	125	124	141	150	145	150	143	145
65.0	114	102	103	94.6	103	102	117	127	123	128	121	123
70.0	90.9	79.1	79.9	71.9	79.7	78.7	94.0	104	100	105	98.4	100
75.0	67.4	55.9	56.6	49.1	56.5	55.8	69.8	80.5	77.0	82.6	75.5	77.2
80.0	43.6	32.6	33.2	26.6	33.2	32.9	46.2	56.3	54.2	59.2	53.0	53.4
85.0	20.2	11.5	12.2	7.21	12.1	11.5	23.1	32.6	31.5	36.2	30.6	30.6
90.0	6.51	4.06	5.81	2.03	5.25	2.94	4.13	11.9	11.3	15.2	10.9	11.4
95.0	2.52	3.85	5.18	1.82	4.62	2.31	0.42	6.16	4.27	6.44	4.55	7.14
100.0	2.31	3.71	4.76	1.82	4.27	2.17	0.56	5.39	3.99	5.74	4.27	6.51
105.0	2.17	3.50	4.06	1.61	3.57	1.96	0.70	4.90	3.71	4.90	3.71	6.02
110.0	2.03	3.36	3.71	1.61	3.22	1.89	0.84	4.41	2.87	4.62	3.15	5.53
115.0	2.03	2.87	3.78	1.68	3.36	1.61	0.98	3.92	2.94	4.34	3.15	4.90
120.0	1.96	2.38	3.57	1.68	3.22	1.54	1.05	3.50	2.87	4.13	3.01	4.27
125.0	1.96	2.03	3.29	1.68	3.08	1.54	1.19	3.22	2.73	3.85	2.80	3.57
130.0	1.96	1.82	3.08	1.68	2.80	1.54	1.33	2.80	2.52	3.64	2.59	3.29
135.0	1.96	1.68	2.80	1.68	2.66	1.47	1.40	2.66	2.38	3.29	2.38	2.94
140.0	1.96	1.12	2.59	1.61	2.45	1.33	1.54	2.73	2.17	3.08	2.10	2.73
145.0	1.89	1.33	2.45	1.54	2.31	1.26	1.61	2.45	2.03	2.80	1.89	2.31
150.0	1.96	1.19	2.31	1.54	2.17	1.26	1.61	2.17	1.82	2.59	1.82	2.17
155.0	2.03	1.26	1.96	1.54	2.10	1.33	1.75	2.17	1.75	2.52	1.61	2.03
160.0	1.96	1.33	2.03	1.47	1.96	1.26	1.82	2.10	1.54	2.38	1.47	2.03
165.0	2.03	1.40	1.89	1.54	1.89	1.40	1.82	2.03	1.47	2.17	1.47	1.96
170.0	2.03	1.47	1.89	1.54	1.89	1.47	1.89	2.03	1.54	2.10	1.47	1.96
175.0	2.03	1.54	1.89	1.61	1.89	1.47	2.03	1.96	1.54	2.10	1.47	1.96
180.0	2.03	1.61	1.82	1.68	1.82	1.54	2.17	1.89	1.54	1.96	1.54	1.82

Test System:HOPOO  
 Temperature:25.3DEG  
 Operators:  
 Test Date:07-21-2022

Test Set: 5.0deg/s C-Gamma (TYPE C)  
 Humidity:65.0%  
 Test Distance:8.368 m  
 Remarks: 24 Volts 12 Sections