

HONGPU GONIOPHOTOMETERS SYSTEM TEST REPORT

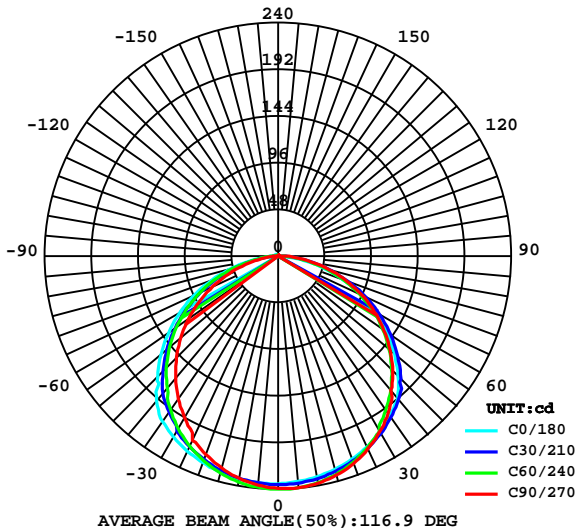
LUMINAIRE PHOTOMETRIC TEST REPORT

Report number:

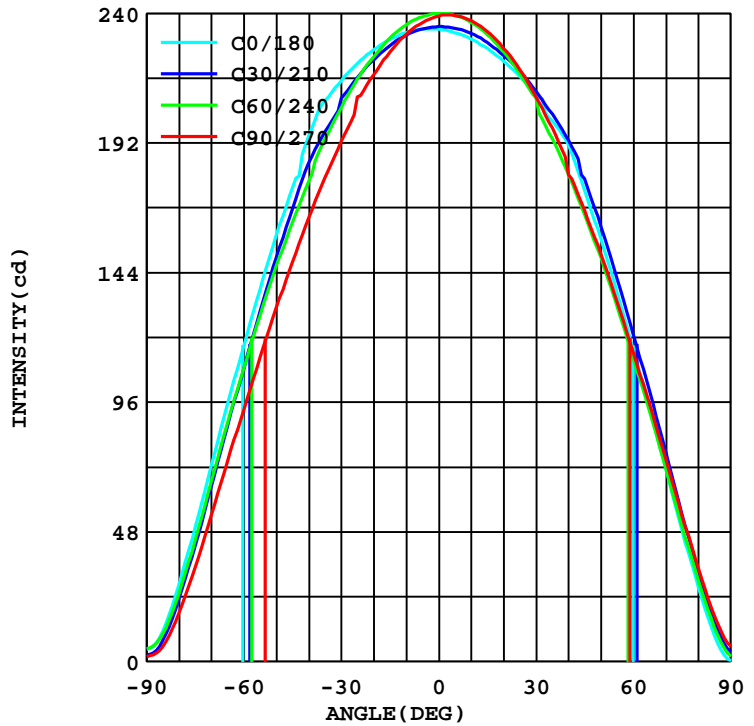
MANUFACTURER:		Address:	
NAME: KBL-F-V-30K-24V		TYPE:	WEIGHT:N/A
SPECIFICATION:		DIMENSION: 48"x0.62"x0.62"	SERIAL No.:N/A

DATA OF LAMP		Imax(cd)	240.2	S/MH(C0/180)	1.37
MODEL		EFFICIENCY(%)	100.0	S/MH(C90/270)	1.21
NOMINAL POWER(W)	14	TOTAL FLUX(lm)	722.07	Voltage(V)	24.03
RATED VOLTAGE(V)	24	EFFICIENCY(lm/W)	50.7	Current(A)	0.593
NOMINAL FLUX(lm)	722.1	η up(%)	1.4	Power(W)	14.25
LAMPS QUANTITY	1	η down(%)	98.6	Power Factor(PF)	1.000
TEST VOLTAGE(V)	24.0	Effective Flux(lm)	700.9	EEL	0.247

LUMINOUS INTENSITY DISTRIBUTION



LUMINOUS INTENSITY DISTRIBUTION



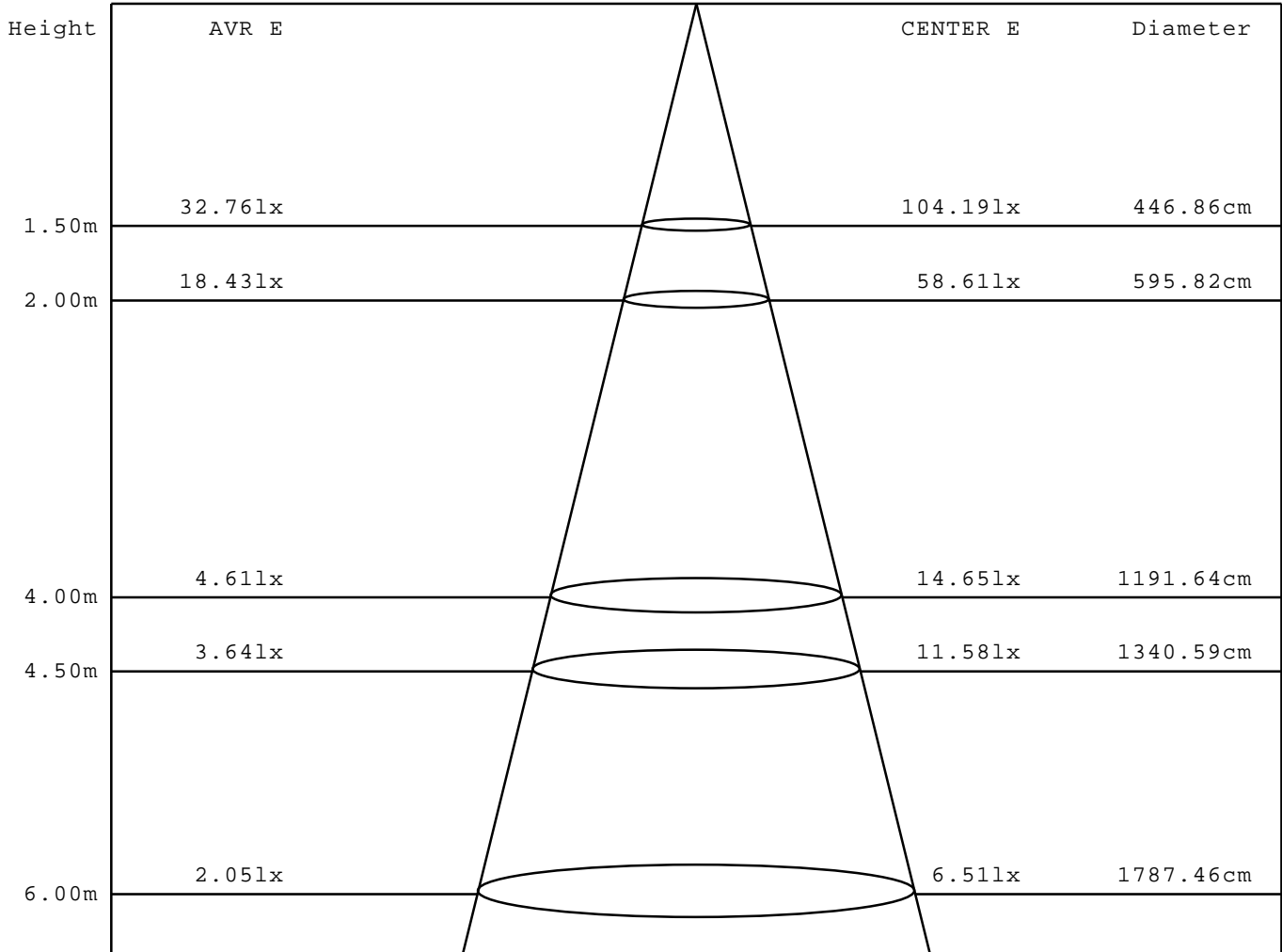
Test System:HOPOO
 Temperature:25.3DEG
 Operators:
 Test Date:07-20-2022

Test Set: 5.0deg/s C-Gamma (TYPE C)
 Humidity:65.0%
 Test Distance:8.368 m
 Remarks: 24 Volts 22 Sections

AVERAGE AND CENTER E Figure

Report number:

MANUFACTURER:	Address:	
NAME: KBL-F-V-30K-24V	TYPE:	WEIGHT:N/A
SPECIFICATION:	DIMENSION:	SERIAL No.:N/A



Angle:112.2deg

Test System:HOP00
 Temperature:25.3DEG
 Operators:
 Test Date:07-20-2022

Test Set: 5.0deg/s C-Gamma (TYPE C)
 Humidity:65.0%
 Test Distance:8.368 m
 Remarks: 24 Volts 22 Sections

HONGPU GONIOPHOTOMETERS SYSTEM TEST REPORT

ZONAL FLUX DIAGRAM

Report number:

MANUFACTURER:	Address:	
NAME: KBL-F-V-30K-24V	TYPE:	WEIGHT:N/A
SPECIFICATION:	DIMENSION:	SERIAL No.:N/A

γ	C0	C45	C90	C135	C180	C225	C270	C315	γ	Φ zone	Φ total
5.0	234.4	236.7	236.8	232.7	233.1	237.1	239.4	233.8	0- 5	5.638	5.638
10.0	233.1	234.0	232.4	229.8	230.7	234.8	237.5	232.2	5- 10	16.75	22.39
15.0	230.5	229.7	225.8	225.5	227.2	230.9	233.5	229.0	10- 15	27.40	49.79
20.0	226.7	223.6	217.5	219.6	222.5	225.3	227.3	224.4	15- 20	37.27	87.07
25.0	221.6	216.1	209.3	212.3	216.8	218.2	219.3	218.2	20- 25	46.11	133.1
30.0	215.3	207.1	192.9	202.0	210.3	210.2	209.3	210.7	25- 30	53.59	186.7
35.0	207.8	194.8	179.1	191.4	200.2	198.3	197.6	200.2	30- 35	59.36	246.1
40.0	194.7	181.3	164.4	177.6	191.5	186.8	180.3	189.3	35- 40	63.42	309.5
45.0	175.8	165.5	148.2	161.8	174.7	172.2	167.2	175.3	40- 45	65.09	374.6
50.0	157.9	148.0	131.0	144.5	156.5	155.1	150.6	158.8	45- 50	64.41	439.0
55.0	138.0	129.0	112.8	125.3	136.5	136.6	133.1	140.5	50- 55	61.48	500.5
60.0	117.2	108.8	93.55	104.7	115.7	116.9	114.6	121.0	55- 60	56.42	556.9
65.0	95.37	87.80	74.08	83.50	93.90	96.21	95.16	100.4	60- 65	49.41	606.3
70.0	72.82	65.99	54.33	61.72	71.42	74.60	75.06	78.60	65- 70	40.70	647.1
75.0	50.06	44.32	35.15	40.36	49.01	52.58	54.26	56.43	70- 75	30.68	677.7
80.0	28.28	24.15	17.92	20.72	27.37	31.47	34.45	35.01	75- 80	20.10	697.8
85.0	11.27	9.033	5.671	6.617	9.523	13.58	17.01	16.49	80- 85	10.30	708.1
90.0	4.621	3.606	1.890	2.205	0.350	2.870	5.461	4.691	85- 90	3.528	711.7
95.0	4.061	2.835	1.330	1.645	0.280	1.330	2.450	2.485	90- 95	1.340	713.0
100.0	3.781	2.520	0.980	1.400	0.420	1.190	2.100	2.310	95-100	1.052	714.1
105.0	3.641	2.275	0.700	1.155	0.560	1.155	1.890	2.275	100-105	0.944	715.0
110.0	3.641	1.925	0.630	1.120	0.630	1.120	1.820	2.275	105-110	0.876	715.9
115.0	3.431	1.820	0.630	1.085	0.770	1.155	1.750	2.205	110-115	0.818	716.7
120.0	3.291	1.750	0.630	1.085	0.910	1.155	1.680	2.170	115-120	0.773	717.5
125.0	3.151	1.715	0.700	1.085	0.980	1.190	1.680	2.170	120-125	0.730	718.2
130.0	3.011	1.715	0.770	1.085	1.050	1.190	1.680	2.100	125-130	0.681	718.9
135.0	2.940	1.155	0.840	1.120	1.190	1.225	1.610	2.065	130-135	0.611	719.5
140.0	1.680	1.155	0.840	1.155	1.190	1.260	1.610	1.995	135-140	0.521	720.0
145.0	1.680	1.190	0.840	1.190	1.260	1.295	1.610	1.680	140-145	0.457	720.5
150.0	1.680	1.225	0.910	1.190	1.330	1.295	1.610	1.645	145-150	0.395	720.9
155.0	1.680	1.260	1.050	1.225	1.330	1.295	1.610	1.680	150-155	0.344	721.2
160.0	1.680	1.295	1.050	1.225	1.400	1.400	1.610	1.470	155-160	0.291	721.5
165.0	1.680	1.330	1.120	1.260	1.470	1.365	1.610	1.365	160-165	0.225	721.7
170.0	1.680	1.330	1.120	1.295	1.540	1.365	1.610	1.330	165-170	0.164	721.9
175.0	1.750	1.330	1.190	1.295	1.540	1.365	1.610	1.330	170-175	0.100	722.0
180.0	1.680	1.365	1.330	1.330	1.680	1.400	1.540	1.365	175-180	0.034	722.0
DEG	LUMINOUS INTENSITY:cd								UNIT:lm		

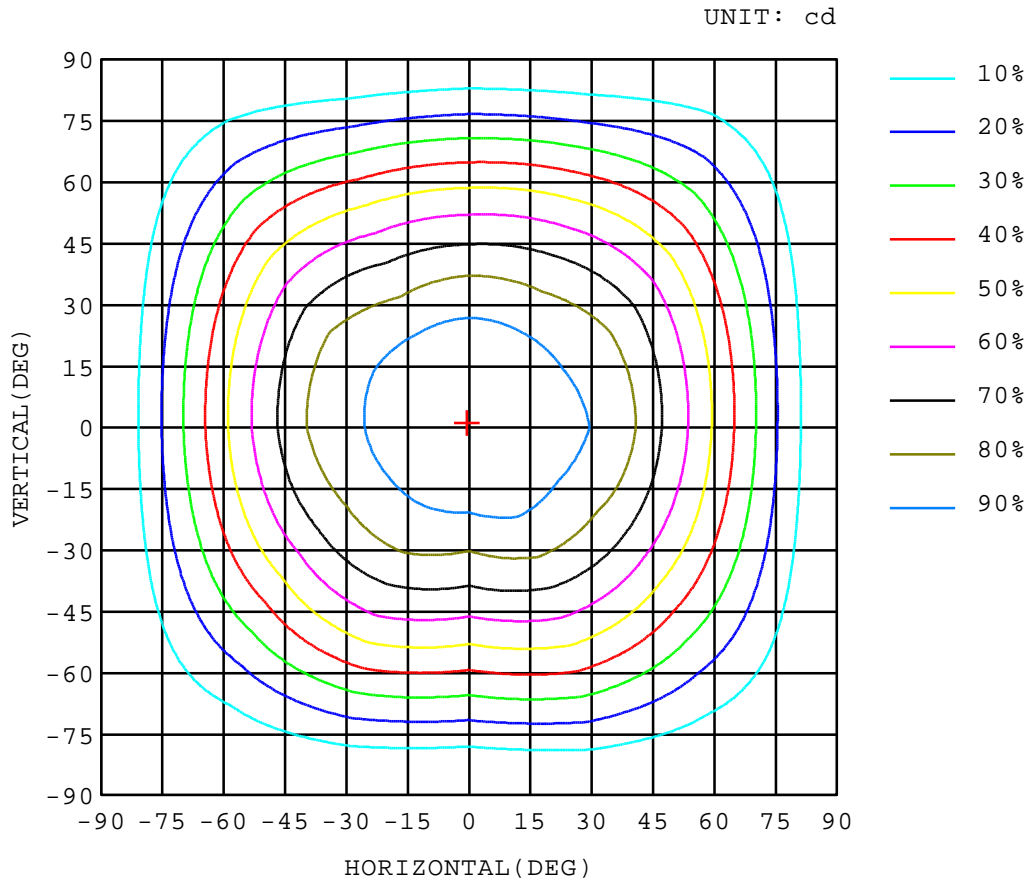
Test System:HOPOO
 Temperature:25.3DEG
 Operators:
 Test Date:07-20-2022

Test Set: 5.0deg/s C-Gamma (TYPE C)
 Humidity:65.0%
 Test Distance:8.368 m
 Remarks: 24 Volts 22 Sections

ISOCANDELA DIAGRAM

Report number:

MANUFACTURER:	Address:	
NAME: KBL-F-V-30K-24V	TYPE:	WEIGHT:N/A
SPECIFICATION:	DIMENSION:	SERIAL No.:N/A



Test System:HOPOO
 Temperature:25.3DEG
 Operators:
 Test Date:07-20-2022

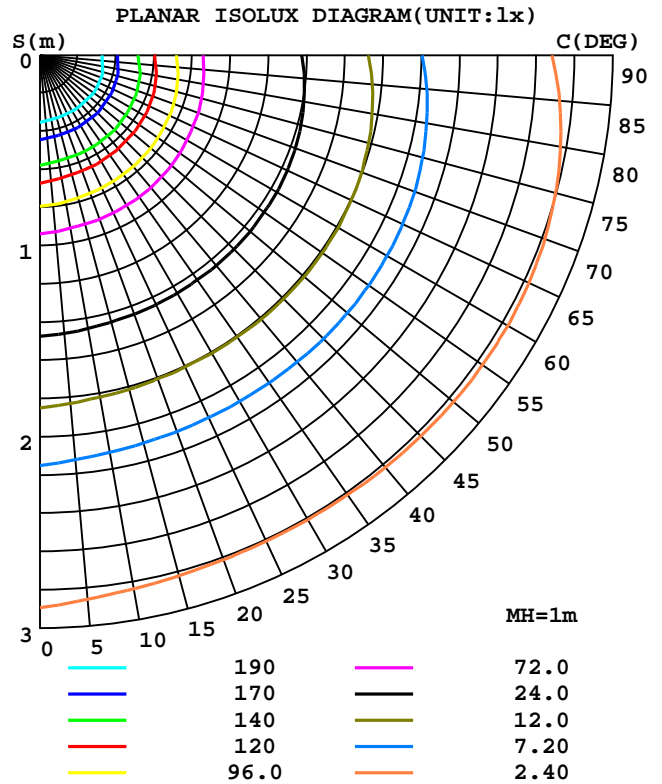
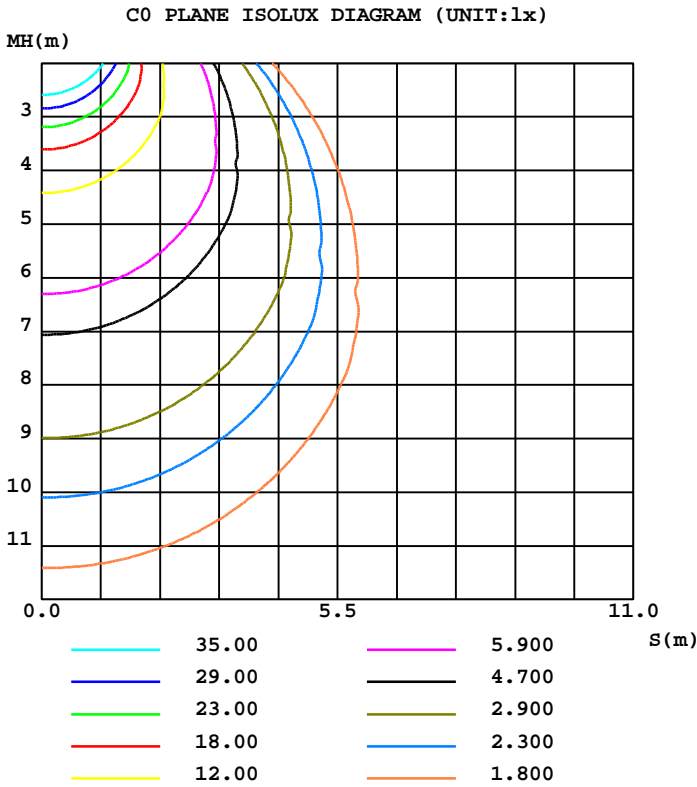
Test Set: 5.0deg/s C-Gamma (TYPE C)
 Humidity:65.0%
 Test Distance:8.368 m
 Remarks: 24 Volts 22 Sections

HONGPU GONIOPHOTOMETERS SYSTEM TEST REPORT

ISOLUX DIAGRAM

Report number:

MANUFACTURER:	Address:	
NAME: KBL-F-V-30K-24V	TYPE:	WEIGHT:N/A
SPECIFICATION:	DIMENSION:	SERIAL No.:N/A



Test System:HOP00
 Temperature:25.3DEG
 Operators:
 Test Date:07-20-2022

Test Set: 5.0deg/s C-Gamma (TYPE C)
 Humidity:65.0%
 Test Distance:8.368 m
 Remarks: 24 Volts 22 Sections

HONGPU GONIOPHOTOMETERS SYSTEM TEST REPORT

LUMINOUS DISTRIBUTION INTENSITY DATA

Report number:

MANUFACTURER:	Address:	
NAME: KBL-F-V-30K-24V	TYPE:	WEIGHT:N/A
SPECIFICATION:	DIMENSION:	SERIAL No.:N/A

UNIT: cd

C(DEG)\ γ (DEG)	0	30	60	90	120	150	180	210	240	270	300	330
0.0	234	235	240	239	235	233	234	235	240	239	235	233
5.0	234	234	239	237	234	232	233	235	239	239	235	233
10.0	233	232	236	232	230	229	231	233	237	238	233	231
15.0	231	228	231	226	226	225	227	229	232	234	230	228
20.0	227	223	224	218	219	220	223	225	226	227	225	224
25.0	222	216	216	209	211	213	217	219	218	219	218	218
30.0	215	209	205	193	202	203	210	211	209	209	210	212
35.0	208	196	194	179	190	192	200	203	194	198	197	203
40.0	195	185	178	164	175	180	192	193	180	180	185	194
45.0	176	168	163	148	161	163	175	179	166	167	171	180
50.0	158	150	147	131	145	144	157	161	149	151	155	163
55.0	138	130	128	113	126	125	137	142	131	133	137	144
60.0	117	109	109	93.5	106	103	116	121	112	115	118	124
65.0	95.3	87.1	88.4	74.0	84.9	82.0	93.9	99.9	92.4	95.1	97.7	103
70.0	72.8	65.0	66.9	54.3	63.3	60.1	71.4	77.6	71.5	75.0	76.0	81.1
75.0	50.0	43.2	45.4	35.1	41.9	38.7	49.0	54.6	50.4	54.2	54.4	58.3
80.0	28.2	23.1	25.1	17.9	22.1	19.2	27.3	33.0	29.9	34.4	33.1	36.8
85.0	11.2	7.84	10.2	5.67	8.33	4.90	9.52	14.6	12.5	17.0	15.1	17.8
90.0	4.62	2.45	4.76	1.89	3.85	0.56	0.35	3.71	2.03	5.46	3.43	5.95
95.0	4.06	1.89	3.78	1.33	2.94	0.35	0.28	2.38	0.28	2.45	1.05	3.92
100.0	3.78	1.75	3.29	0.98	2.52	0.28	0.42	2.10	0.28	2.10	1.05	3.57
105.0	3.64	1.75	2.80	0.70	2.03	0.28	0.56	1.96	0.35	1.89	1.12	3.43
110.0	3.64	1.75	2.10	0.63	1.89	0.35	0.63	1.89	0.35	1.82	1.19	3.36
115.0	3.43	1.82	1.82	0.63	1.75	0.42	0.77	1.82	0.49	1.75	1.19	3.22
120.0	3.29	1.75	1.75	0.63	1.68	0.49	0.91	1.75	0.56	1.68	1.26	3.08
125.0	3.15	1.75	1.68	0.70	1.61	0.56	0.98	1.68	0.70	1.68	1.33	3.01
130.0	3.01	1.75	1.68	0.77	1.54	0.63	1.05	1.68	0.70	1.68	1.33	2.87
135.0	2.94	0.70	1.61	0.84	1.54	0.70	1.19	1.68	0.77	1.61	1.40	2.73
140.0	1.68	0.77	1.54	0.84	1.54	0.77	1.19	1.68	0.84	1.61	1.40	2.59
145.0	1.68	0.84	1.54	0.84	1.54	0.84	1.26	1.68	0.91	1.61	1.40	1.96
150.0	1.68	0.91	1.54	0.91	1.47	0.91	1.33	1.68	0.91	1.61	1.40	1.89
155.0	1.68	0.98	1.54	1.05	1.47	0.98	1.33	1.61	0.98	1.61	1.47	1.89
160.0	1.68	1.05	1.54	1.05	1.47	0.98	1.40	1.68	1.12	1.61	1.33	1.61
165.0	1.68	1.12	1.54	1.12	1.47	1.05	1.47	1.61	1.12	1.61	1.19	1.54
170.0	1.68	1.12	1.54	1.12	1.47	1.12	1.54	1.61	1.12	1.61	1.12	1.54
175.0	1.75	1.19	1.47	1.19	1.47	1.12	1.54	1.54	1.19	1.61	1.12	1.54
180.0	1.68	1.26	1.47	1.33	1.47	1.19	1.68	1.54	1.26	1.54	1.19	1.54

Test System:HOPOO
 Temperature:25.3DEG
 Operators:
 Test Date:07-20-2022

Test Set: 5.0deg/s C-Gamma (TYPE C)
 Humidity:65.0%
 Test Distance:8.368 m
 Remarks: 24 Volts 22 Sections